

### Printing

on paper packages



### Customization

of small batches of goods



### Development

of individual printing systems

## Our advantages:

- CMYK full-color printing;
- printing from 1 unit up to 50 units / min;
- low printing cost — 0.01 euro / unit;
- Hewlett Packard official partners;
- fast dry;
- good price & high quality equipment;
- you can print almost on everything — paper bags, cardboard, assembled and disassembled boxes, envelopes, textiles, wood;
- different heights printing (printing head adjustment);
- easy to use, own software;
- customer technical support;
- customization service on request (own manufacturing and engineering potential);
- own developments of printer accessories;
- 10 years of experience in mechanical engineering, 12 engineers, our equipment is used in 51 countries of the world, on all continents.



### Ticab Printing System TPS

Industrial inkjet printer for large-format non-contact printing of small runs: from 1 to several thousand copies. The printer allows you to apply images on absorbent materials — paper, wood, fabric, etc. A four-color CMYK palette and a resolution of 1,200 nozzles per inch of each color allows you to get images of high definition and quality. The pigments in the ink are resistant to fading, scratches and moisture. The dimensions of the printing area are up to 29.7 cm x 91.44 cm. It is implemented on the basis of Hewlett-Packard thermal jet printing technology.

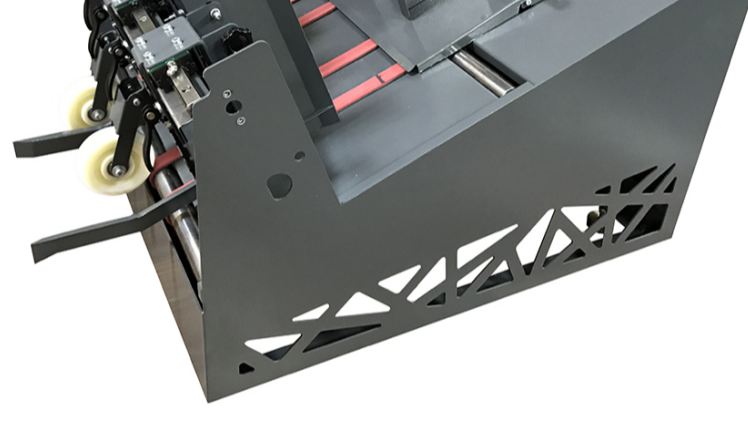


### Feeder 600 Mini

Feed the package upside down.  
Dimensions of the package without handles, feeding with the bottom forward (min - max) — width: 100-540 mm, height: 100-500 mm.  
Thickness of the workpiece (min-max) — 0,1-30 mm.  
Weight — 44 kg.  
Dimensions, mm — 656x716x592 h.

### Feeder 600 Maxi

Printing on bags with handles.  
Feed the package upside down.  
Dimensions of the package without handles, feeding with the bottom forward (min - max) — width: 135-495 mm, height: 160-450 mm.



Dimensions of the package with handles, feeding sideways forward, (min-max) — width: 160-450 mm, height without handles: 135-495 mm, total height with handles: 180-600 mm.  
Thickness of the workpiece (min-max) — 0,1-50 mm  
Weight — 95 kg.  
Dimensions, mm — 692x922x621 h.



### Drying module DR 600

**Wide** - 40 sm, feeder (60 belt) for screen-printing, pad printing.  
**DRYING MODULE WITH 40CM WIDTH BELT**

#### Function:

Device for drying printed objects by means of screen-printing, pad printing or shrink foil.  
Tunnel for drying T-shirts, plastisol paints, for glass, metal, forms etc.  
Support, metal construction, aesthetic design.  
Conveyor belt is made of a mesh covered with Teflon.  
Height adjustment start/finish up to 20 cm.  
Convenient and easy-to-use tunnel.

#### Technical parameters:

**Power supply:** AC380V / 230V, 1/3 phase, 4kW power  
Soft temperature control - max 180 C  
Heating section length 60 cm, total length 150 cm  
60cm belt width  
Max object height 28cm  
Soft adjustable belt speed 1-10 m / min  
Weight approx. 150KG

Images may differ in appearance from the actual product (e.g. color).  
We invite you to cooperate.

## Accessories

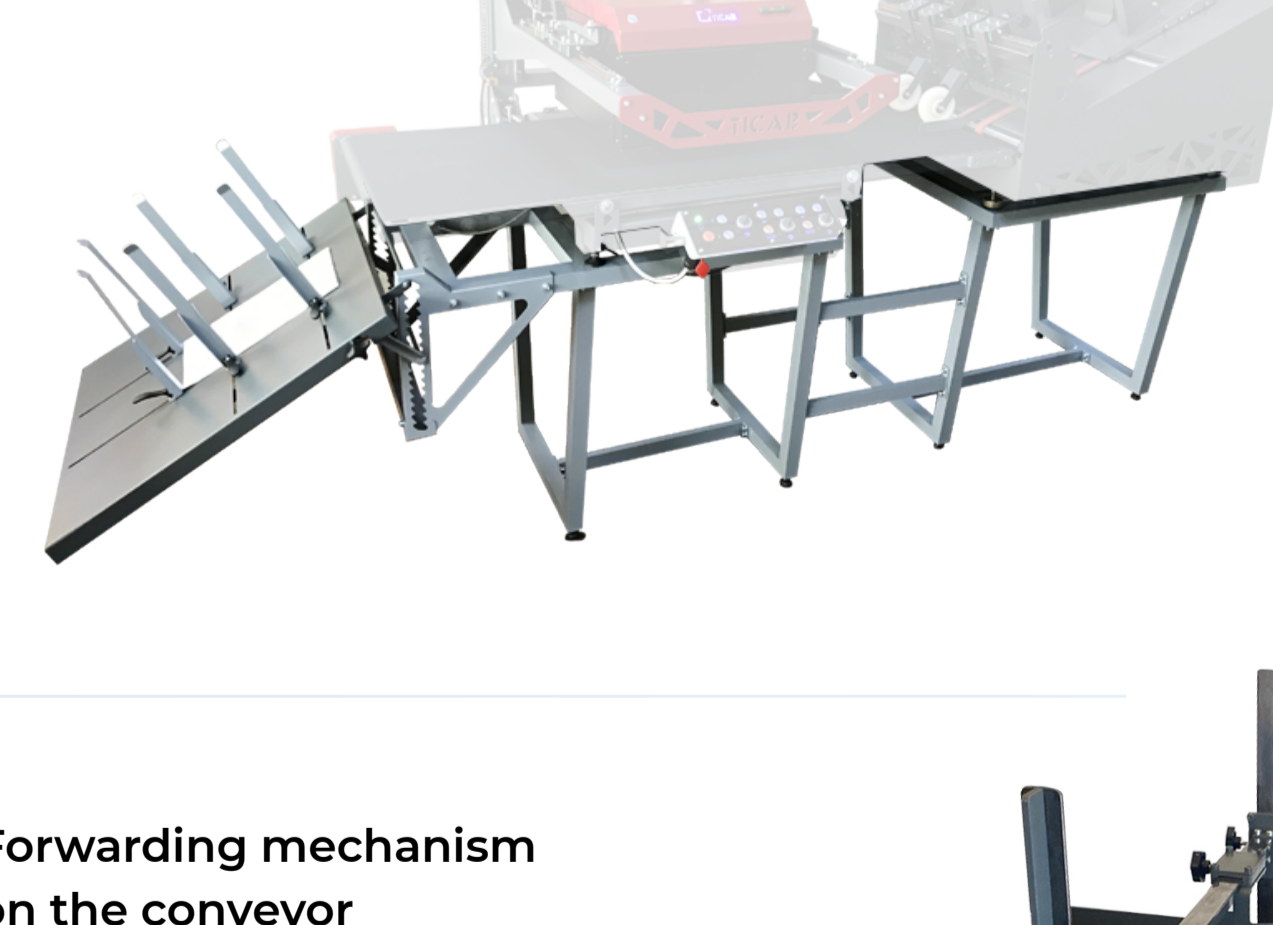
### Table with receiving tray for TICAB PRINTING SYSTEM TPS

#### Ergonomics

Designed specifically for TICAB PRINTING SYSTEM TPS. It provides reliable and ergonomic placement of printing equipment, which facilitates setup and operation. The presence of the receiving tray makes it possible to simplify the selection of finished products as much as possible. Easy to set up and operate.

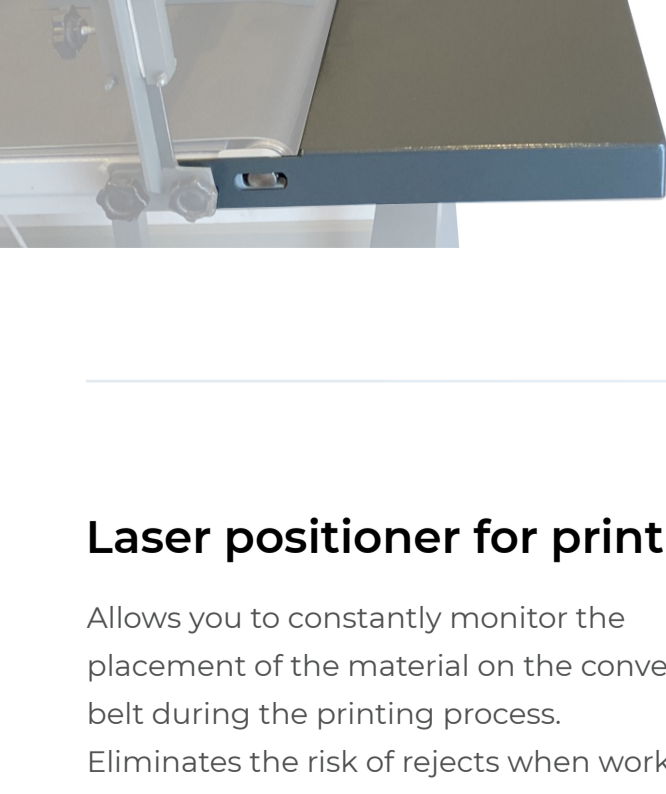
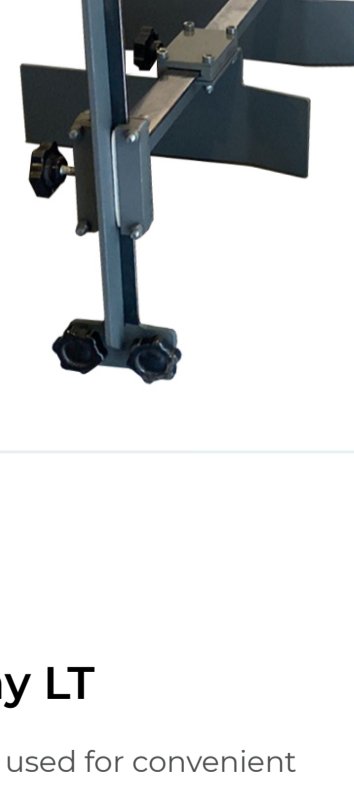
#### Reliability

Quality construction: the table is made of high quality materials and allows high permissible load, which will provide reliable working conditions.



### Forwarding mechanism on the conveyor

It allows you to adjust the location of the materials for printing, respectively the print head, and guaranteed accurate positioning will ensure perfectly correct drawing. The guides can be adjusted both vertically and horizontally, which does not limit you in the choice of materials when working with them.



### Loading Tray LT

The loading tray is used for convenient placement and feeding of material.

### Laser positioner for printing

Allows you to constantly monitor the placement of the material on the conveyor belt during the printing process. Eliminates the risk of rejects when working with large volumes, and guarantees perfect accuracy when applying the image.

